

Spring Retractable, Hand Crank, Motor Driven Hose Reels

Water - 1/4", 3/8", 1/2" I.D.

- Compact design and quality steel construction
- The high pressure water swivel is designed to handle a broad range of pressures, temperatures, and chemicals
- Ideal for agricultural, marine, equipment cleaning, and pressure washing applications
- Individually powder coated components offer maximum protection from premature corrosion
- Models without hose are rated up to 5000 PSI
- Full flow swivel combines the highest grade seal design and materials with bearing areas to ensure maximum service life
- Available in hand crank, spring driven, or electric motor drive models



CT6100HN



PWD76075 OHP



CA38106 M



**High Pressure
Hose Assemblies
& Bumper Stops**
See page 40

Hose I.D.	in mm		in mm		in mm		Shipping Weight	Max Pressure	NPT(F) Reel Inlet	NPT(F) Reel Outlet	Size Index Page	Size Index #
	1/4	6	3/8	10	1/2	13						
Hose O.D.	.530	13	.730	19	.850	22						
Model without hose	Hose Length						lbs kg	psi bar	in	in	Size Index Page	Size Index #
	ft	m	ft	m	ft	m						
Manual Hand Crank Pressure Wash Reels Maximum Temperature 210 °F (99 °C)												
CT6050HN	---	---	50	15	---	---	13 6	5000 345	1/2	3/8	---	1
CT6100HN	---	---	100	30	---	---	17 8	5000 345	1/2	3/8	---	2
CTJ6200HN	---	---	200	61	150	46	28 13	5000 345	1/2 (M)	3/8	---	3
H18006 M	150	46	100	30	---	---	31 14	5000 345	1/2	1/2	25	4
CA38106 M	200	61	140	43	100	30	41 19	5000 345	1/2	1/2	26	---
CA38112 M	425	130	300	91	200	61	46 21	5000 345	1/2	1/2	26	---
Electric Motor Driven Pressure Wash Reels Maximum Temperature 212 °F (100 °C)												
EA38106 M12D	200	61	140	43	100	30	63 29	5000 345	1/2	1/2	26	---
EA38112 M12D	425	130	300	91	200	61	71 32	5000 345	1/2	1/2	26	---

PSI rating based upon 2.4 to 1 safety factor.

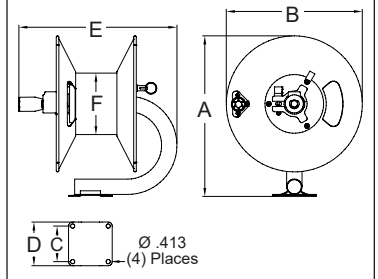
Model with hose & bumper	Shipping Weight		Hose I.D.		Hose O.D.		Hose Length		Max Pressure	NPT(M) Hose Outlet	NPT(F) Reel Inlet	NPT(F) Reel Outlet	Size Index Page	Size Index #
	lbs	kg	in	mm	in	mm	ft	m						
Spring Retractable Pressure Wash Reels Maximum Temperature 210 °F (99 °C)														
PW7650 OHP	60	27	3/8	10	.730	19	50	15	4800 331	1/4	1/2	3/8	12	---
PWD76075 OHP	90	41	3/8	10	.730	19	75	23	4800 331	1/4	1/2	3/8	13	2
PW81100 OHP	119	54	3/8	10	.730	19	100	30	4800 331	3/8	1/2	3/8	14	1

PSI rating based upon 2.4 to 1 safety factor.

Model without hose & bumper	Shipping Weight	Hose Capacity				Max Pressure	NPT(F) Reel Inlet	NPT(F) Reel Outlet	Size Index Page	Size Index #			
		I.D.		O.D.							Length		
		in	mm	in	mm							ft	m
Spring Retractable Pressure Wash Reels Maximum Temperature 210 °F (99 °C)													
PW7600 OHP	43	20	3/8	10	.730	19	50	15	5000 345	1/2	3/8	12	---
PWD76005 OHP	60	27	3/8	10	.730	19	75	23	5000 345	1/2	3/8	13	2
PW81000 OHP	86	39	3/8	10	.730	19	100	30	5000 345	1/2	3/8	14	1

PSI rating based upon 2.4 to 1 safety factor.

Dimensions						
	1		2		3	
	in	mm	in	mm	in	mm
A	15 ⁵ / ₈	397	15 ⁵ / ₈	397	19 ⁷ / ₈	505
B	13 ¹ / ₄	337	13 ¹ / ₄	337	16	406
C	3 ¹ / ₂	89	3 ¹ / ₂	89	5	127
D	4 ¹ / ₄	108	4 ¹ / ₄	108	6	152
E	15 ¹ / ₂	394	19 ¹ / ₂	495	19 ⁷ / ₈	505
F	6	152	6	152	6	152



**Interactive
Reel Catalog**

Visit reelcraft.com/catalog for complete product specifications, parts, and accessories.



**Pivot Bases &
Swing Brackets**
See page 43